

Test Report

Report No. A2170069126101001

Applicant SHENZHEN ZHENGXING ADHESIVE-PRODUCT CO., LTD.

Address NO.20,EAST AREA,MAQIAO,NANYUE VILLAGE,LONGGANG DISTRICT,SHENZHEN,
CHINA**The following sample(s) and sample information was/were submitted and identified by/on the behalf of the client**

Sample Name BOPP PACKING TAPE
 Sample Received Date Dec. 20, 2017
 Testing Period Dec. 20, 2017 to Dec. 23, 2017

Test Requested As specified by client, to test Lead(Pb), Cadmium(Cd), Mercury(Hg), Hexavalent Chromium(Cr(VI)), Polybrominated Biphenyls(PBBs), Polybrominated Diphenyl Ethers (PBDEs), Phthalates (DBP, BBP, DEHP, DIBP) in the submitted sample(s).

Test Method Please refer to the following page(s).

Test Result(s) Please refer to the following page(s).

Tested by

Kid Zhang

Approved by

Hill Zheng

Hill Zheng

Technical Manager

Reviewed by

Amber Feng

Date

Dec. 23, 2017

No. R179751898



检验检测专用章

Centre Testing International Group Co., Ltd. CTI Building, No. 4, Liuxian 3rd road, Xin'an Street, Bao'an District, Shenzhen, P. R. China

Test Report

Report No. A2170069126101001

Page 2 of 7

Test Method

Test Item(s)	Test Method	Measured Equipment(s)
Lead(Pb)	IEC 62321-5:2013 Ed.1.0	ICP-OES
Cadmium(Cd)	IEC 62321-5:2013 Ed.1.0	ICP-OES
Mercury(Hg)	IEC 62321-4:2013 Ed.1.0	ICP-OES
Hexavalent Chromium(Cr(VI))	IEC 62321-7-2:2017 and/or determination of Total Chromium by IEC 62321-5:2013 Ed.1.0	UV-Vis/ICP-OES
Polybrominated Biphenyls(PBBs)	IEC 62321-6:2015 Ed 1.0	GC-MS
Polybrominated Diphenyl Ethers (PBDEs)	IEC 62321-6:2015 Ed 1.0	GC-MS
Phthalates (DBP, BBP, DEHP, DIBP)	IEC 62321-8:2017	GC-MS

Test Report

Report No. A2170069126101001

Page 3 of 7

Test Result(s)

Tested Item(s)	Result	MDL
Lead(Pb)	N.D.	2 mg/kg
Cadmium(Cd)	N.D.	2 mg/kg
Mercury(Hg)	N.D.	2 mg/kg
Hexavalent Chromium(Cr(VI))	N.D.	8 mg/kg
Tested Item(s)	Result	MDL
Polybrominated Biphenyls(PBBs)		
Monobromobiphenyl	N.D.	5 mg/kg
Dibromobiphenyl	N.D.	5 mg/kg
Tribromobiphenyl	N.D.	5 mg/kg
Tetrabromobiphenyl	N.D.	5 mg/kg
Pentabromobiphenyl	N.D.	5 mg/kg
Hexabromobiphenyl	N.D.	5 mg/kg
Heptabromobiphenyl	N.D.	5 mg/kg
Octabromobiphenyl	N.D.	5 mg/kg
Nonabromobiphenyl	N.D.	5 mg/kg
Decabromobiphenyl	N.D.	5 mg/kg
Tested Item(s)	Result	MDL
Polybrominated Diphenyl Ethers (PBDEs)		
Monobromodiphenyl ether	N.D.	5 mg/kg
Dibromodiphenyl ether	N.D.	5 mg/kg
Tribromodiphenyl ether	N.D.	5 mg/kg
Tetrabromodiphenyl ether	N.D.	5 mg/kg
Pentabromodiphenyl ether	N.D.	5 mg/kg
Hexabromodiphenyl ether	N.D.	5 mg/kg
Heptabromodiphenyl ether	N.D.	5 mg/kg
Octabromodiphenyl ether	N.D.	5 mg/kg
Nonabromodiphenyl ether	N.D.	5 mg/kg
Decabromodiphenyl ether	N.D.	5 mg/kg

Test Report

Report No. A2170069126101001

Page 4 of 7

Test Result(s)

Tested Item(s)	Result	MDL
Phthalates (DBP, BBP, DEHP, DIBP)		
Dibutyl phthalate(DBP) CAS#:84-74-2	N.D.	50 mg/kg
Butyl benzyl phthalate(BBP) CAS#:85-68-7	N.D.	50 mg/kg
Di-(2-ethylhexyl) phthalate(DEHP) CAS#:117-81-7	N.D.	50 mg/kg
Diisobutyl phthalate(DIBP) CAS#:84-69-5	N.D.	50 mg/kg

Tested Sample/Part Description Brown adhesive tape with red printing

Remark: The sample(s) had been dissolved totally tested for Lead, Cadmium, Mercury.

-MDL = Method Detection Limit

-N.D. = Not Detected (<MDL)

-mg/kg = ppm = parts per million

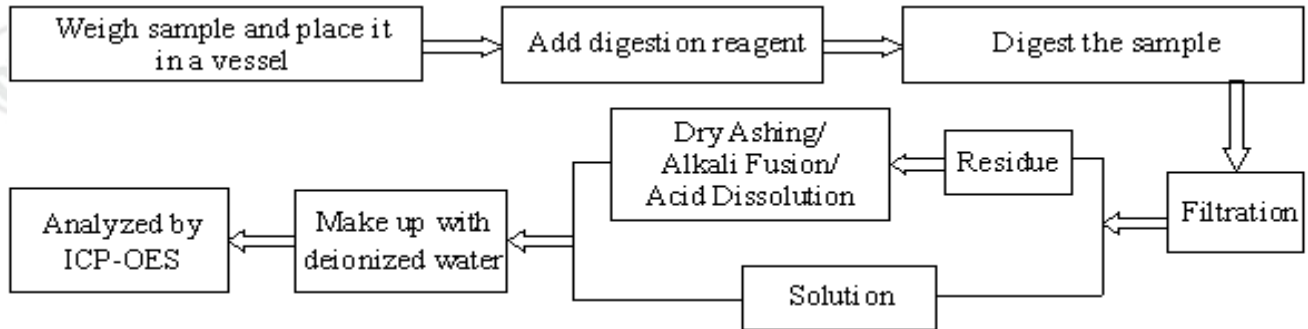
Test Report

Report No. A2170069126101001

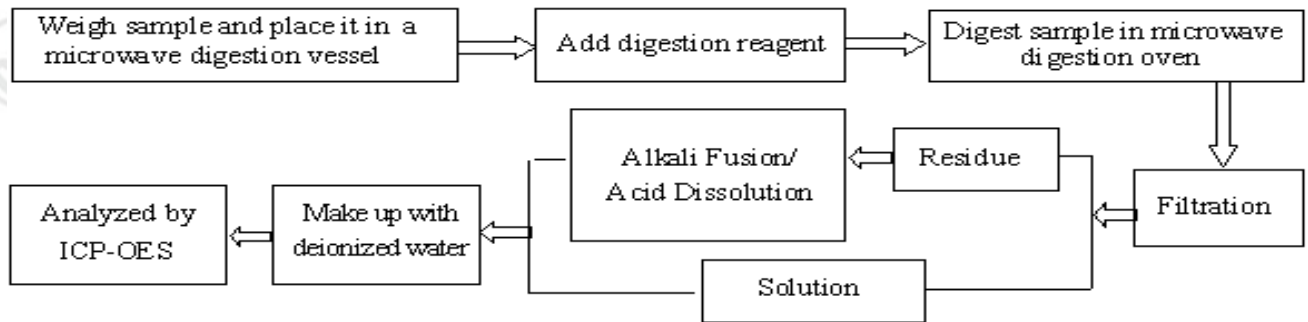
Page 5 of 7

Test Process

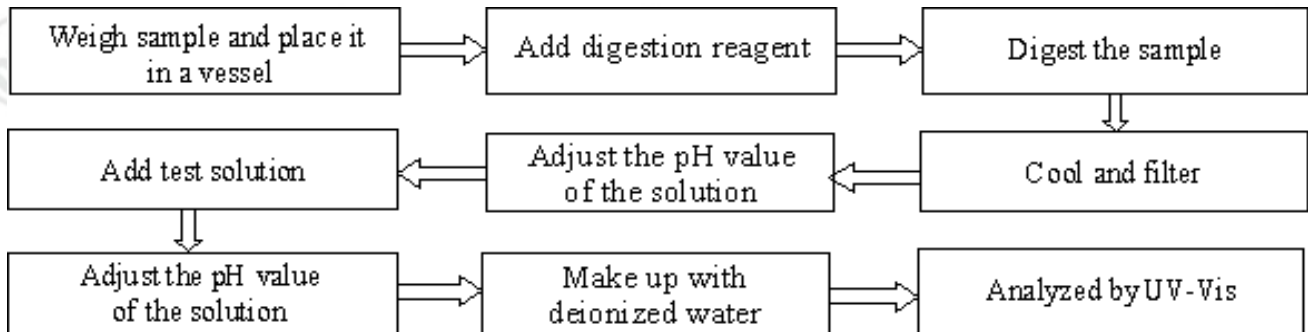
1. Lead(Pb), Cadmium(Cd), Chromium(Cr)



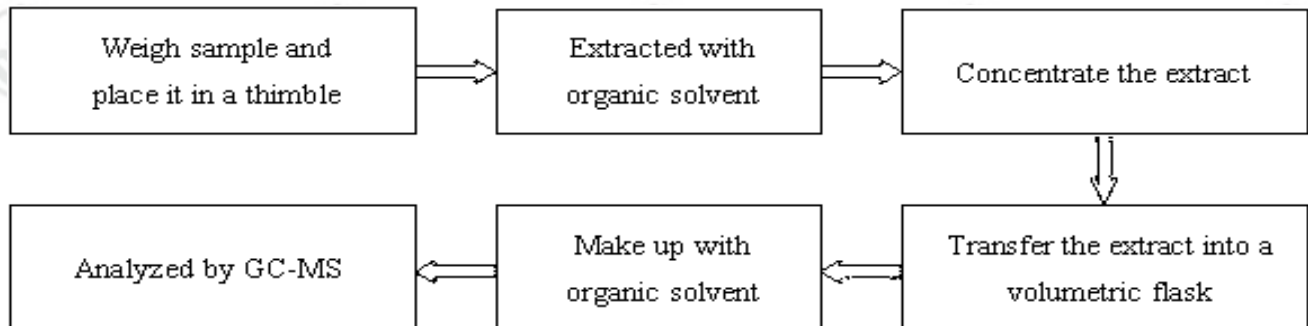
2. Mercury(Hg)



3. Hexavalent Chromium(Cr(VI))



4. Polybrominated Biphenyls(PBBs), Polybrominated Diphenyl Ethers (PBDEs)

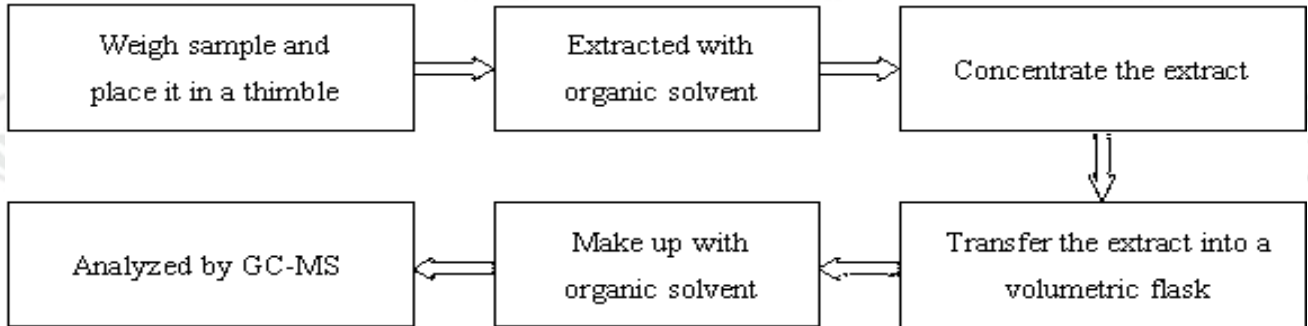


Test Report

Report No. A2170069126101001

Page 6 of 7

5. Phthalates (DBP, BBP, DEHP, DIBP)

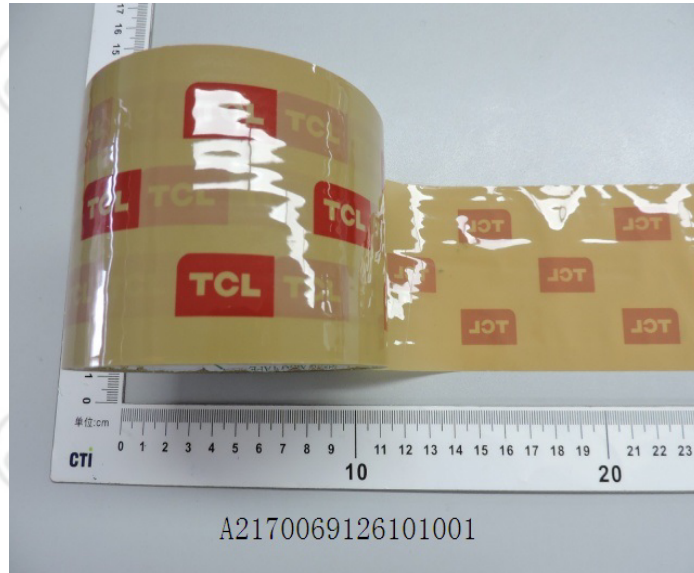


Test Report

Report No. A2170069126101001

Page 7 of 7

Photo(s) of the sample(s)



*** End of report ***

The test report is effective only with both signature and specialized stamp. The result(s) shown in this report refer only to the sample(s) tested. Without written approval of CTI, this report can't be reproduced except in full.